

## NH fuse switch-disconnector size 00, 160 A, panel mounting (33 199)



### Description

#### Article

Part No.: 33 199

QUADRON® Panel

NH fuse switch-disconnector size 00, 160 A, panel mounting  
connection cleat 70 mm<sup>2</sup>

#### System

Mounting plate

Product group 09

Subgroup 03

pack size 1

EAN 4021267331993

#### Advantages of the product

For safe connection of the leads, the shock protection is split into 2. Self-closing inspection holes are available in the cover.

eCl@ss 6.1 27142108

eCl@ss 7.1 27142108

ETIM 4.0 EC001040

ETIM 5.0 EC001040

## Approvals

### Standards

IEC 60947-1:2007 + A1:2010 + A2:2014

IEC 60947-3:2008 + A1:2012

### Approvals

IEC (CB), UL, Germanischer Lloyd, CCC



for UL feeder circuits >250V

Type number: LTS-00

UL file: E230163, UL category (for USA): IZLT2 <http://www.ul.com>

CCC certificate: 2004010302117250

## Product data

### Electrical data

Rated current (IEC): 160 A

Rated voltage (IEC) AC: 690 V

Rated voltage (IEC) DC: 440 V

Rated current (UL): 160 A

Rated voltage (UL) AC: 600 V

Utilisation category AC-23B (400V)  
AC (IEC 60947-3) : AC-23B (500V/125A)  
AC-22B (690V)  
AC-21B (690V)  
AC-20B (1000V) at pollution degree 2

visible information required if used at more than 690V AC: do not switch under load

Utilisation category DC specifications: 2 current paths (L1,L3) in series  
DC (IEC 60947-3) : DC-22B (220V)  
DC-22B (440V/125A)  
DC-21B (440V)  
DC-20B (1000V) at pollution degree 2

visible information required if used at more than 440V DC: do not switch under load

Power dissipation:

The power dissipation at a typical load of 80% of the rated current results to 4.5 W.  
(The power dissipation for operation with rated current would be 7 W.)

rated isolation voltage  $U_i$  (AC): 800  
V  
Rated surge voltage  $U_{imp}$  : 6 kV  
max. permitted voltage (IEC) AC: 800  
V  
max. permitted voltage (IEC) DC: 800  
V

cond. rated short-circuit current with fuses: 50 kA / 690V  
approved with fuse links of characteristics: gG

SCCR: 100 kA

for fuse links IEC 60269-2-1 (I) / DIN VDE 0636-201 size 00 up to 12W power dissipation

Special operating conditions corresponding to IEC / EN 61439-1 may yield to faulty activations of pilot switches and fuse monitors. The operating conditions have to be considered for the analysis of status signals.

Entsprechend den angegebenen AC- und DC- Schalteigenschaften und unter Berücksichtigung der Überlastbedingungen, sind gewisse Abstände zu geerdeten Metallteilen einzuhalten. Nähere Informationen auf Anfrage.

Bei Verwendung als Trennschalter ist die Einhaltung der Abstände nicht erforderlich.

Degree of protection IP30 at front, degree of protection near terminal depends on installation

### **Mechanical data**

W x H x D: 106 x 200 x 83

Weight: 78 kg/100

Poles: 3-pole

front degree of protection: IP30

### **Terminal points**

clamp-type terminals :

1,5 - 70 mm<sup>2</sup>

flexible cables with wire-end ferrule,

stranded round cables,

la. Cu max. 12 mm wide, max. 10 mm thick

Md 3 Nm

(flexible cables of maximum cross-section may not fit when using wire-end ferrule)

Accessories: Screw connector: M8 / 70mm<sup>2</sup>; 12 - 14Nm torque, wedge clamp terminal: Cu, Al\*

16-70mm<sup>2</sup> s(r), s(s), f+AE; 3Nm torque tunnel terminal 3x Cu 1.5-16mm<sup>2</sup> s(r), f+AE; 3Nm torque

\*Connections not maintenance-free if aluminium conductors are used.

### **Material properties**

Main body: temperature stability 125°C,  
self-extinguishing in acc. to UL 94,  
creepage resistance CTI 600,  
halogen-free

Shock protection cover: temperature stability 125°C,  
self-extinguishing in acc. to UL 94,  
creepage resistance CTI 200

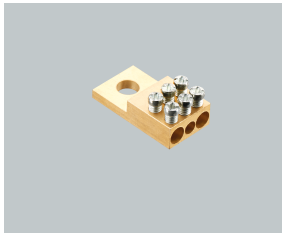
Handle: temperature stability 125°C,  
self-extinguishing in acc. to UL 94,  
creepage resistance CTI 200

Contacts: spring-loaded copper contacts, silver plated

## Version

Variant with fuse monitoring: 33 207

## Accessories



**01 182**

tunnel terminal

1 x 2,5 - 16mm<sup>2</sup> + 2 x 2,5 - 25mm<sup>2</sup>

NH 00



**03 849**

lid interlock

for sealing wire

Size 00

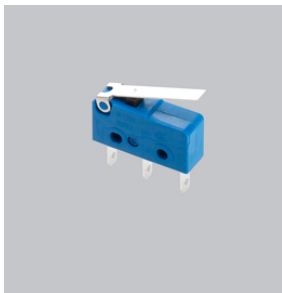


**30 894**

M8 screw connector

with spring washer

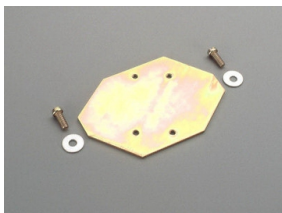
size 00



**33 156**

pilot switch

changeover 250 V AC / 5 A; 30 V DC / 4 A



**33 193**

rapid mounting set

for 2 DIN rails, rails centre distance 125 mm or 150 mm

size 00

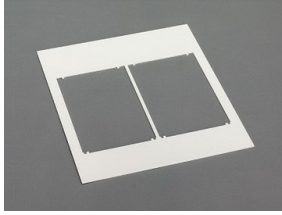


**33 224**

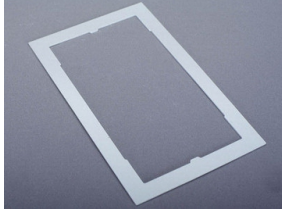
prism terminal, single, for Cu and Al cables

16 - 70 mm<sup>2</sup>

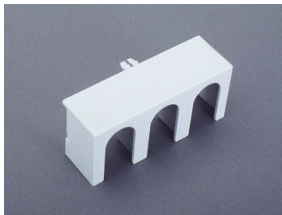
NH 00



**78 105**  
Trim frame, double  
232 x 210, not for 33221, 33222  
size 00



**78 893**  
Trim frame, single  
130 x 210, not for 33221, 33222  
size 00



**79 811**  
cover for cable lugs, attachable top/bottom  
for 33 200, 33 208, 33 329, 33 394, 33 398, 33 420  
NH 00