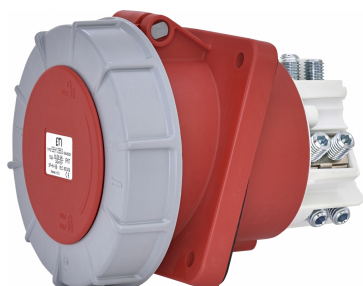


# EEH 12553



## Specificatii

|                       |                            |
|-----------------------|----------------------------|
| Cod ETI               | 004482091                  |
| Descriere             | EEH 12553                  |
| Denumire clasă        | CEE priză                  |
| Tensiunea nominală(V) | 400                        |
| Număr de poli         | 3+N+PE                     |
| Grad de protecție IP  | IP67                       |
| Tip priză             | Priză încastrată în perete |

[Pagina de produse online](#) 

## Alta documentatie



[Catalog caracteristici tehnice](#)

[Declaratie CE](#)

[Eplan mușchi](#)

## ETIM clasificare internationala

|                                 |                                 |
|---------------------------------|---------------------------------|
| Clasificare                     | EC001317                        |
| Denumire clasă                  | Panel-mounted CEE socket outlet |
| IEC-amperage                    | 125A                            |
| Voltage according to EN 60309-2 | 400 V (50+60 Hz) red            |
| Number of poles                 | 3                               |
| Clock hour position             | 6h                              |
| Identification colour           | Red                             |
| Degree of protection (IP)       | IP67                            |
| Connection system               | Screwed terminal                |
| Insert direction                | Straight                        |
| Material                        | Plastic                         |

## Desen cotat

|          | A  | B  | øD   | øD1 | ød1 | E  | F  | G  | H  | J  | K  |
|----------|----|----|------|-----|-----|----|----|----|----|----|----|
| EEH 1632 | 78 | 85 | 75   | 56  | 5,5 | 60 | 60 | 30 | 30 | 39 | 39 |
| EEH 1643 | 80 | 85 | 78   | 62  | 5,5 | 60 | 60 | 31 | 29 | 41 | 39 |
| EEH 1653 | 81 | 85 | 87   | 65  | 5,5 | 60 | 60 | 31 | 29 | 42 | 39 |
| EEH 3232 | 89 | 95 | 92,5 | 68  | 5,5 | 60 | 70 | 38 | 32 | 47 | 42 |
| EEH 3243 | 89 | 95 | 92,5 | 68  | 5,5 | 60 | 70 | 38 | 32 | 47 | 42 |
| EEH 3253 | 91 | 95 | 100  | 74  | 5,5 | 60 | 70 | 36 | 34 | 49 | 42 |

|          | A   | C   | ød1 | øD1 | E  | F  | J  | K  |
|----------|-----|-----|-----|-----|----|----|----|----|
| EEH 634x | 131 | 111 | 6,8 | 93  | 90 | 90 | 52 | 79 |

|             | A   | B   | C  | D  | E  | F  | G   | H   | J  | ød1 |
|-------------|-----|-----|----|----|----|----|-----|-----|----|-----|
| EEH 12543-p | 114 | 114 | 90 | 90 | 92 | 77 | 130 | 102 | 90 | 7   |
| EEH 12553-p | 114 | 114 | 90 | 90 | 92 | 77 | 130 | 102 | 90 | 7   |

