

## \*MOD.ETITEC B T12 275/12,5



### Specificatii

Cod ETI	002440334
Descriere	*MOD.ETITEC B T12 275/12,5
Denumire clasă	Protec ie supratensiuni
Func ie	Modul SPD
Tip	T1, T2
Utilizare cu	ETITEC B T12

[Pagina de produse online](#) 

### Alta documentatie



[Catalog caracteristici tehnice](#)

[Model 3D](#)

[Manual de instructiuni](#)

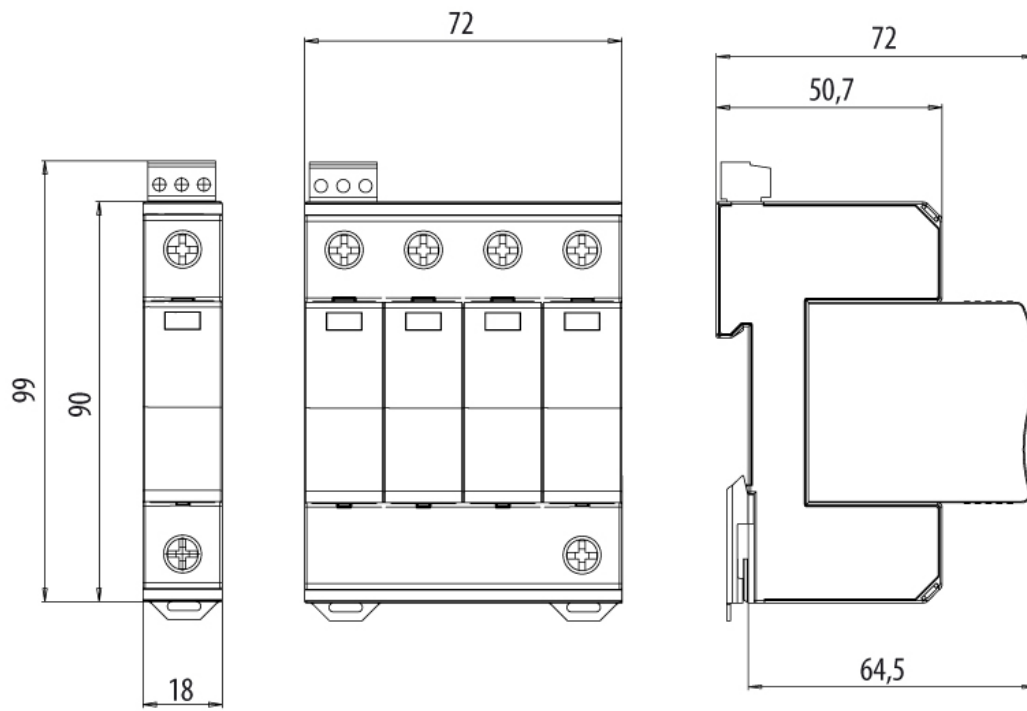
[Declaratie CE](#)

[Eplan mușchi](#)

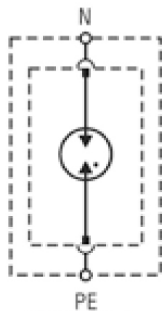
## ETIM clasificare internațională

Clasificare	EC001457
Denumire clasă	Combined arrester for power supply systems
System configuration DC	
System configuration IT	
System configuration TN	1
System configuration TN-C	1
System configuration TN-S	1
System configuration TT	1
System configuration other	
Number of poles	1
Lightning impulse current (10/350 μs)	12,5
Max. continuous voltage AC	275
Nominal voltage AC	230
Mounting method	On basic element
Construction size	1 modular spacing
Signalling at the device	Optical
Test class	Type 1 + 2
Exhausting	
Integrated backup fuse	
Degree of protection (IP)	IP20

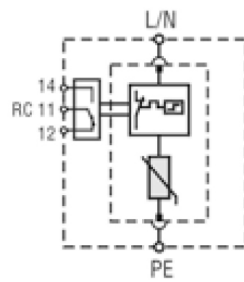
## Desen cotat



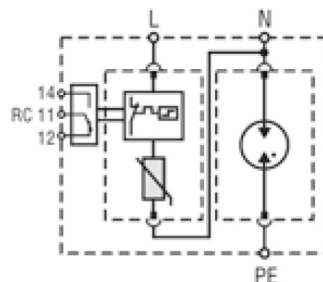
## Simbol/Conexiune



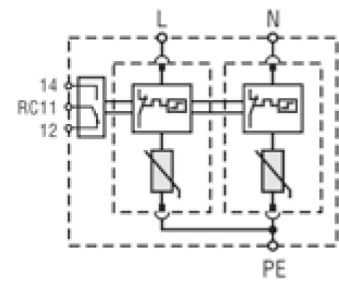
ETITEC BT12 G



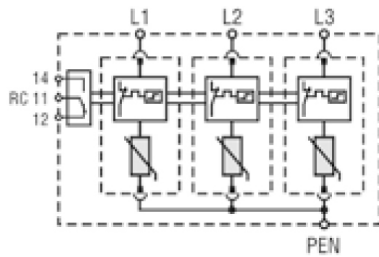
ETITEC BT12 1+0 RC



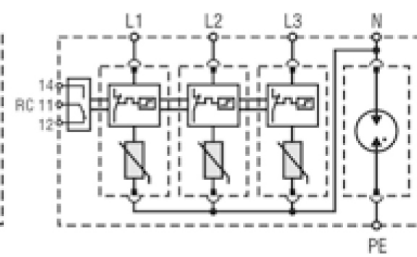
ETITEC BT12 1+1 RC



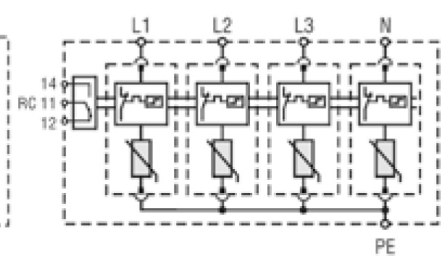
ETITEC BT12 2+0 RC



ETITEC BT12 3+0 RC



ETITEC BT12 3+1 RC



ETITEC BT12 4+0 RC