

# SV 316 3p 16A



## Specificatii

Cod ETI	002423321
Descriere	SV 316 3p 16A
Denumire clasă	Comutator integrat
Funcție	Comutatoare de sarcină
Curent nominal (A)	16

[Pagina de produse online](#) 

## Alta documentatie



[Catalog caracteristici tehnice](#)

[CertIFICATE](#)

[Model 3D](#)

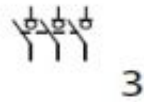
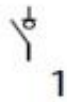
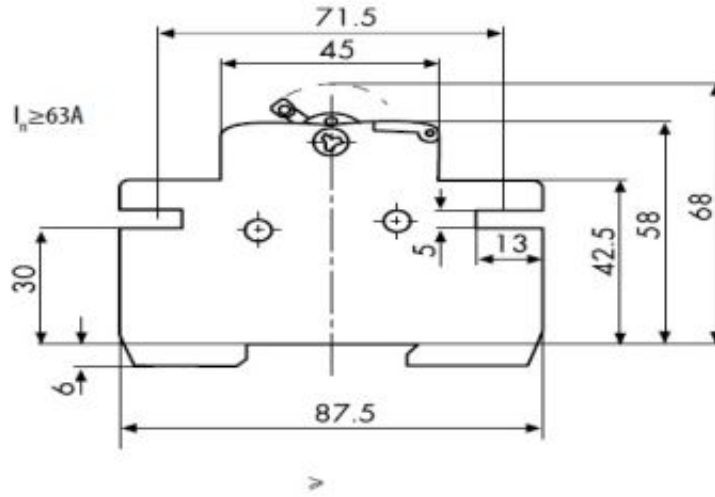
[Declaratie CE](#)

[Eplan mușchi](#)

## ETIM clasificare internațională

Clasificare	EC000216
Denumire clasă	Switch disconnector
Version as main switch	1
Version as maintenance-/service switch	1
Version as safety switch	1
Version as emergency stop installation	1
Max. rated operation voltage Ue AC	400V
Rated permanent current Iu	16A
Conditioned rated short-circuit current Iq	2kA
Number of poles	3
Motor drive optional	
Motor drive integrated	
Voltage release optional	1
Device construction	Built-in device fixed built-in technique
Suitable for distribution board installation	1
Type of control element	Rocker lever
Interlockable	
Type of electrical connection of main circuit	Frame clamp
Degree of protection (IP), front side	IP20

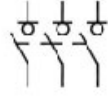
## Desen cotat



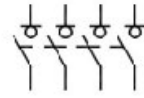
## Simbol/Conexiune



**2**



**3**



**4**